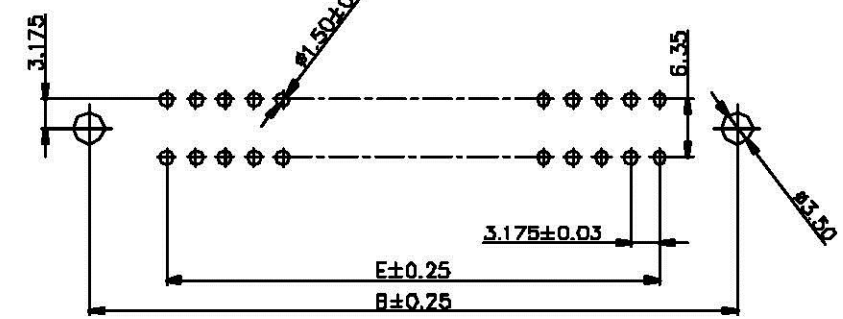
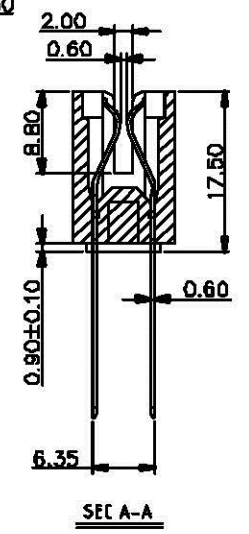
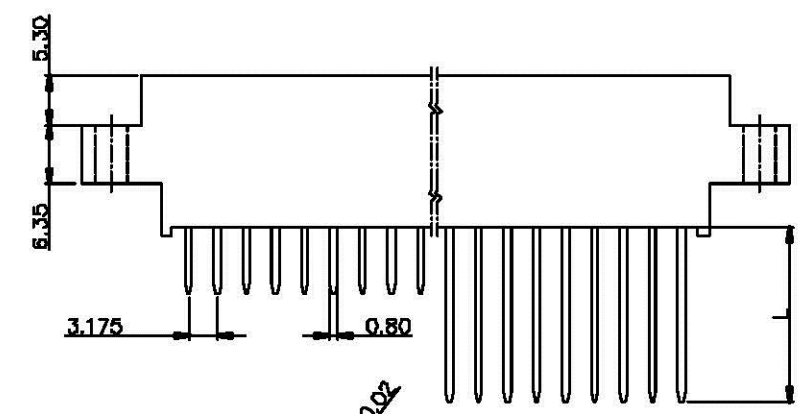
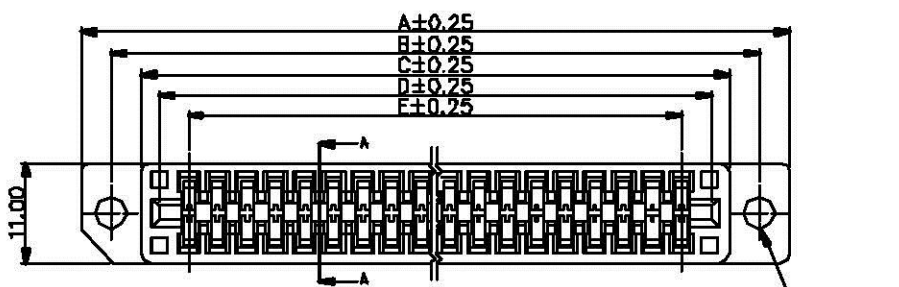


REV.	ECN NO.	ADDP.
H	1514010	Joseph Chou 8/1/2004



FEATURE:

INSULATOR
Glass-Filled P.B.T. is 94V-0 rated
CONTACT
Phosphor Bronze selective gold plating
over nickel

SPECIFICATION:

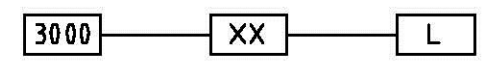
Current Rating : 3 amperes
Contact Resistance : 20 miniohms max.
Operation Temperature : -55° c to +105° c
Voltage Rating : 800 VAC 1 minute
Insulation Resistance : 5000 megohms min.
Insertion Force : 412 grams max. per pair
Withdrawal Force : 32 grams min. per pair

NOTE:

ORDERING INFORMATION

ex

SERIES NO. CONTACTS NO. TAIL LENGTH.



CONTACTS NO.	DIM A	DIM B	DIM C	DIM D	DIM E
15/31	68.08	61.47	54.52	51.81	44.45
18/36	77.60	71.99	64.04	61.33	53.97
21/41	83.95	77.34	71.39	66.68	61.32
22/44	91.31	83.69	76.74	73.13	66.67
28/56	119.35	112.74	95.79	92.18	85.72
31/61	115.70	119.19	102.14	98.43	92.17
36/72	134.75	128.14	121.19	117.40	111.12
40/80	147.45	141.84	133.89	130.18	123.82
43/86	156.97	151.36	143.41	139.71	133.35
51/101	179.21	172.59	165.64	161.93	155.57

TAIL LENGTH	L
A	7.20mm
B	19.00mm

X ₁ 1.10	X ₂ 1.38	XX ₁ 0.25	NAME INTENDED USE!	CTL CORPORATION
X ₂	X ₁	XX ₂	EDGE CARD CONN.	
UNITS: mm	DATE: 8/1/2004	PART NO. INTENDED USE!	TITLE:	
MATL:	CONTACT: PHOSPHOR BRONZE	3001 SERIES	EDGE CONNECTOR 3.175mm PITCH WITH MID-HIGH MOUNTING EARS	
	HOUSING: P.B.T. UL94V-1	ADDP: Joseph Chou	DWGNO: 011-1001-530	
		AIWD: Ching-Yi Yu	SCALE: N/A	SHEET: 1/1
		DR: Zi.Hsiang.Chen	REV: H	